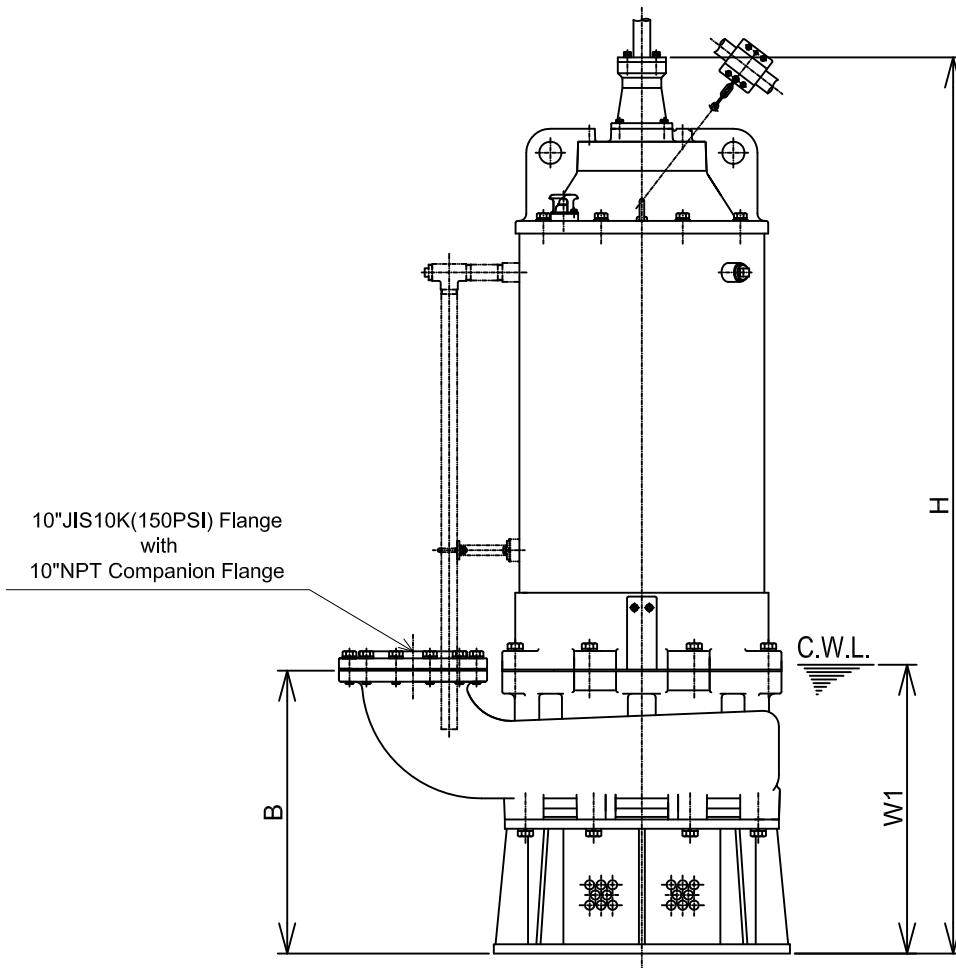
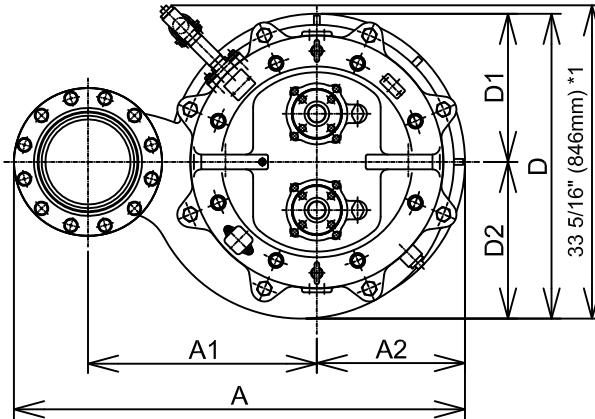




GSZ-4 SERIES
HIGH VOLUME - DEWATERING PUMPS

DIMENSIONS

GSZ-150-4



C.W.L. :Continuous running Water Level
*1 is reference

DIMENSIONS:USCS(Inch)

| Model | HP | NOM. SIZE | Pump & Motor | | | | | | | | C.W.L. | *Wt. |
|-----------|-----|-----------|--------------|---------|--------|---------|--------|--------|--------|--------|--------|--------|
| | | | A | A1 | A2 | B | D | D1 | D2 | H | W1 | (lbs.) |
| GSZ-150-4 | 200 | 10" | 47 15/16 | 24 5/16 | 12 3/4 | 30 1/16 | 32 3/8 | 12 3/4 | 16 5/8 | 95 1/4 | 30 3/4 | 5140 |

*Excluding Cable

DIMENSIONS:METRIC(mm)

| Model | kW | NOM. SIZE | Pump & Motor | | | | | | | | C.W.L. | *Wt. |
|-----------|-----|-----------|--------------|-----|-----|-----|-----|-----|-----|------|--------|------|
| | | | A | A1 | A2 | B | D | D1 | D2 | H | W1 | (kg) |
| GSZ-150-4 | 150 | 250 | 1218 | 618 | 400 | 764 | 823 | 400 | 423 | 2420 | 780 | 2330 |

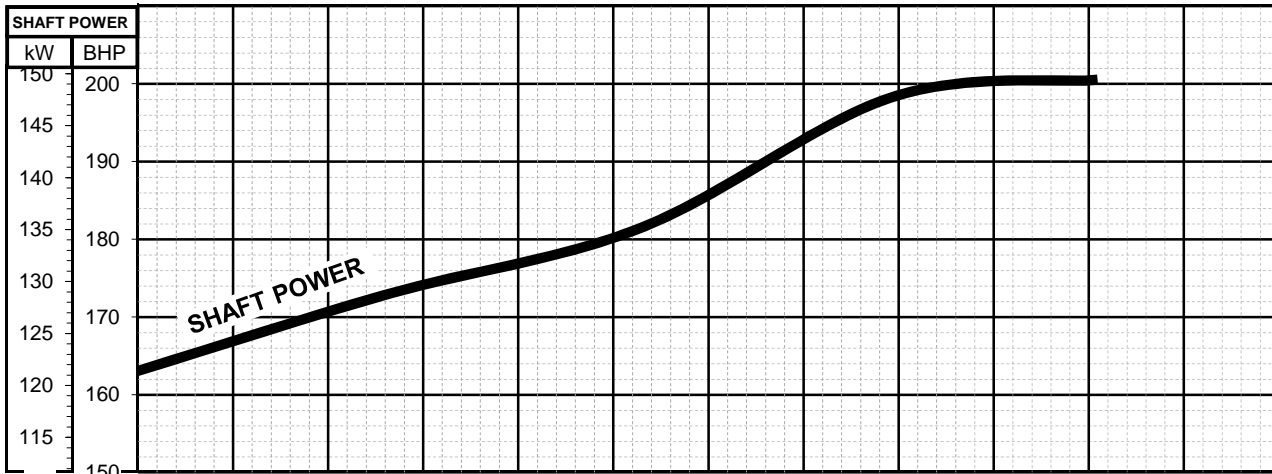
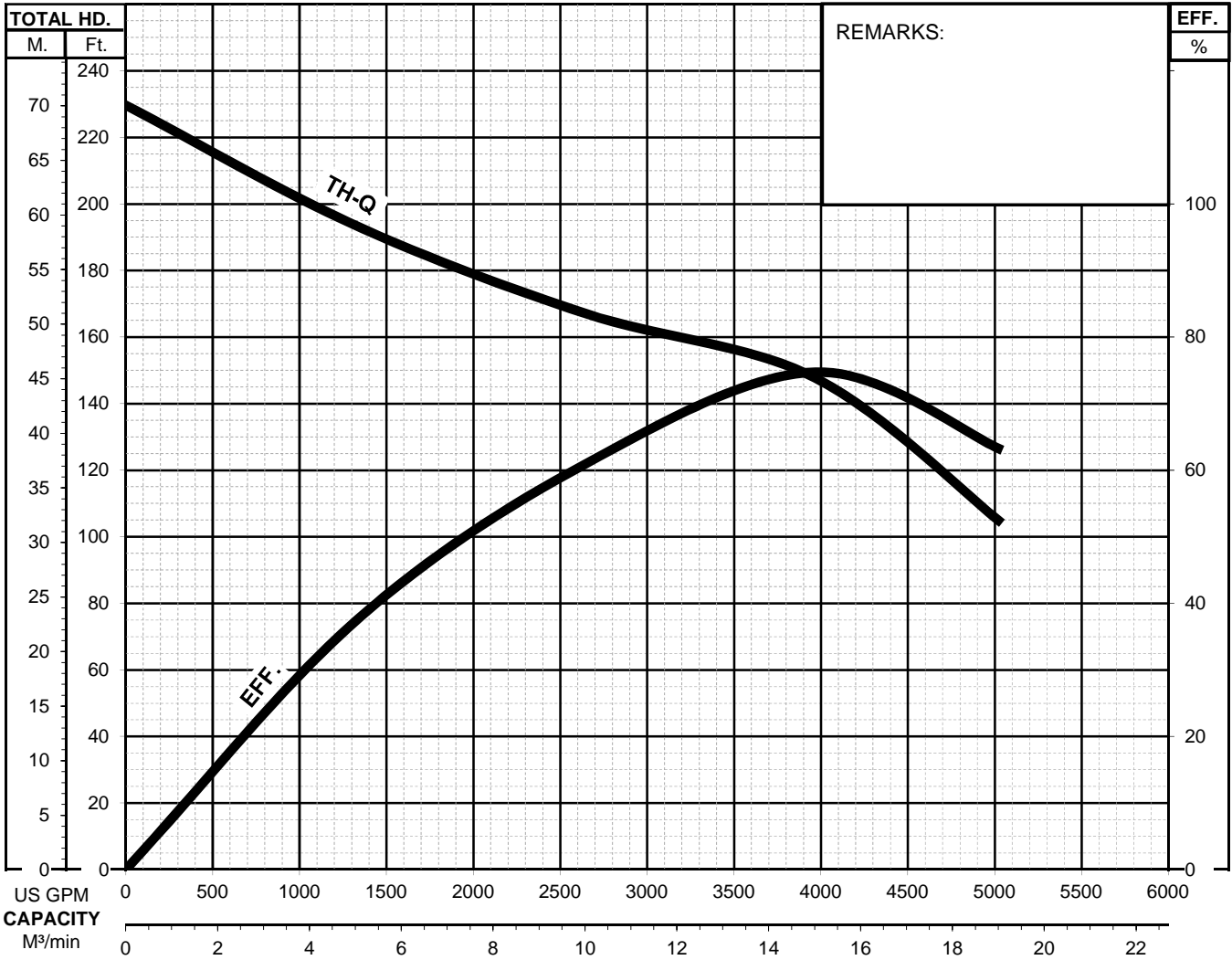


GSZ - SEREIES

HIGH VOLUME DEWATERING PUMPS

PERFORMANCE
CURVE

| MODEL | BORE | HP | KW | RPM | SOLIDS DIA. | LIQUID | SG. | VISCOSITY | TEMP. |
|-------------------------------|-----------|-----------|-----------|----------|-----------------|-----------------|------------|-----------|-------|
| GSZ-150-4 | 10"/250mm | 200 | 150 | 1775 | 0.984"/25mm | Water | 1.0 | 1.123cSt. | 60°F |
| PUMP TYPE | PHASE | VOLTAGE | AMPERAGE | HZ | STARTING METHOD | INS. CLASS | | | |
| High Volume - Dewatering Pump | 3 | 440 / 460 | 265 / 265 | 60 | Star-Delta | F | | | |
| CURVE No. | DATE | PHASE | VOLTAGE | AMPERAGE | HZ | STARTING METHOD | INS. CLASS | | |
| - | - | - | - | - | - | - | - | | |

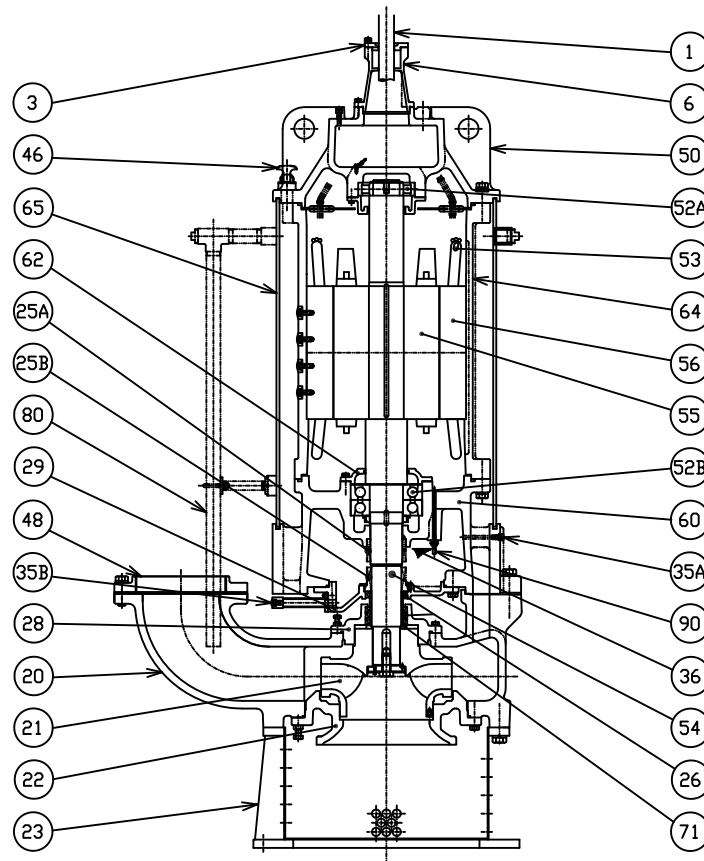




GSZ-4 SERIES
HIGH VOLUME - DEWATERING PUMPS

SECTIONAL VIEW

GSZ-150-4



| PART# | DESCRIPTION | MAIN MATERIAL / NOTE | RELATED ASTM,AISI CODE | RELATED EN CODE | QTY |
|-------|-------------------------|--|-----------------------------|----------------------------------|-----|
| 1 | Power Cable | Chloroprene Sheath AWG 1/0-3C, 4-1C, 14-3C -50ft | | | 1 |
| | Power Cable | Chloroprene Sheath AWG 1/0-3C -50ft | | | 1 |
| 3 | Gland | Cast Iron | A48M Class30B | EN 1561 GJL-200 | 2 |
| 6 | Stuffing Box | Cast Iron | A48M Class30B | EN 1561 GJL-200 | 2 |
| 20 | Pump Casing | Cast Iron | A48M Class30B | EN 1561 GJL-200 | 1 |
| 21 | Impeller | High Chrome Cast Iron | A532 Class III TypeA | DIN 1695 G-X260Cr27 | 1 |
| 22 | Suction Cover | Cast Iron | A48M Class30B | EN 1561 GJL-200 | 1 |
| 23 | Suction Strainer | Steel | A283 Grade D | EN 10025 S275 | 1 |
| 25A | Mechanical Seal | Carbide Alloy / MU0095 | | | 1 |
| 25B | Mechanical Seal | Silicon Carbide / ML0090 | | | 1 |
| 26 | Oil Seal | NBR / TC10012513 | | | 4 |
| 28 | Seal Housing | Cast Iron | A48M Class30B | EN 1561 GJL-200 | 1 |
| 29 | Oil Casing | Cast Iron | A48M Class30B | EN 1561 GJL-200 | 1 |
| 35A | Oil Plug | Stainless Steel | S 30400 | 1.4301 | 4 |
| 35B | Oil Plug | Stainless Steel | S 30400 | 1.4301 | 1 |
| 36 | Lubricant | Turbine Oil ISO VG32 or SAE 10W-20 | | | |
| 46 | Air Release Valve | Steel (Cold Rolled) | A109 / A1008 | EN 10130 | 1 |
| 48 | Companion Flange | Cast Iron / NPT 10" JIS10K | A48M Class30B | EN 1561 GJL-200 | 1 |
| 50 | Motor Bracket | Cast Iron | A48M Class35B | EN 1561 GJL-250 | 1 |
| 52A | Upper Bearing | #NU316 | | | 1 |
| 52B | Lower Bearing | #7320BTDB | | | 1 |
| 53 | Motor Protector | | | | 3 |
| 54 | Shaft | Stainless Steel | S 42000 | 1.4021 | 1 |
| 55 | Rotor | | | | 1 |
| 56 | Stator | | | | 1 |
| 60 | Bearing Housing | Cast Iron | A48M Class35B | EN 1561 GJL-250 | 1 |
| 62 | Bearing Cover | Cast Iron | A48M Class35B | EN 1561 GJL-250 | 1 |
| 64 | Motor Housing | Cast Iron | A48M Class35B | EN 1561 GJL-250 | 1 |
| 65 | Outer Cover | Steel Pipe (& Steel) | A53 Type F (& A283 Grade D) | DIN 1615 St 33 (& EN 10025 S275) | 1 |
| 71 | Shaft Sleeve | Stainless Steel | S 40300 | 1.4000 | 1 |
| 80 | Cooling Pipe Set | Steel | A283 Grade D | EN 10025 S275 | 1 |
| 90 | Leak Sensor (Electrode) | Stainless Steel | S 30300 | 1.4305 | 1 |

| PARTS LIST | | HIGH VOLUME DEWATERING PUMP | | | 5/13/2022 | |
|------------|------------|--------------------------------------|------|------------------------------|-----------|-------|
| ITEM | PART No. | DESCRIPTION | QTY | SIZE | MATERIAL | NOTES |
| 1 | 141-005-18 | Hex.Nut | 8 | M8 | SUS304 | |
| 2 | 010-164-17 | Cable Clip | 2Set | 100×110×3.2T | SS400 | |
| 3 | 010-129-10 | Cable Clip Rubber | 4 | 115×100×2T | NBR | |
| 4 | 140-055-10 | Hex.Bolt | 8 | M8×25L | SUS304 | |
| 5 | 011-000-44 | Shackle | 2 | 5mm | SS | |
| 6 | 095-100-18 | Chain | 2 | d5(9-Link) | SS400 | |
| 7 | 072-107-27 | Eye Bolt | 2 | M16 | SUS304 | |
| 8 | 009-134-14 | Terminal | 6 | R-60-10 | CU | |
| 9 | 009-117-11 | Terminal | 1 | R-22-6 | CU | |
| 10 | 009-116-10 | Terminal | 3 | R-2-4 | CU | |
| 11 | 140-078-51 | Hex.Bolt | 8 | M10×35L(Fully threaded bolt) | SUS304 | |
| 12 | 141-006-19 | Hex.Nut | 8 | M10 | SUS304 | |
| 13 | 003-000-40 | Gland | 2 | NO.8 | FC200 | |
| 14 | 004-000-43 | Cable Bush | 2 | φ46.5xφ85x60L | NBR | |
| 15 | 006-000-50 | Stuffing Box | 2 | NO.8 | FC200 | |
| 16 | 122-264-18 | O-Ring | 2 | φ140×φ3.5 | NBR | * |
| 17 | 140-076-17 | Hex.Bolt | 8 | M10×30L | SUS304 | |
| 18 | 142-164-19 | Spring Washer | 8 | M10 | SUS304 | |
| | 001-009-73 | Cabtyre Cable Set 440/460V-60Hz(USA) | 1 | 2PNCTF7C×60SQ×15m | | |
| | 001-009-74 | Cabtyre Cable Set 440/460V-60Hz(USA) | 1 | 3PNCT3C×60SQ×15m | | |
| 24 | 009-117-11 | Terminal | 1 | R-22-6(For Cabtyre Cable) | CU | |
| 25 | 000-000-09 | Lead Wire | 1 | 22SQ×400L | PVC | |
| 26 | 143-000-58 | Cross-recessed Pan Screw | 1 | M6×12L | SWRM3 | |
| 27 | 009-117-11 | Terminal | 2 | R-22-6(For Lead Wire) | CU | |
| 28 | 009-115-19 | Connector | 2 | PC-4020F | | |
| 29 | 009-114-18 | Connector | 1 | PC-4020M | | |
| 30 | 141-004-59 | Hex.Nut | 7 | M6 | SWRM3 | |
| 31 | 009-135-15 | Terminal | 6 | R-60-6(For Cabtyre Cable) | CU | |
| 32 | 009-117-11 | Terminal | 6 | R-22-6(For Motor) | CU | |
| 33 | 140-029-28 | Hex.Bolt | 7 | M6×10L | SWRM3 | |
| | 200-000-16 | Electrical tape | 1 | N tape(0.5x19x10M) | (V/m) | |
| | 200-000-17 | Electrical tape | 1 | S tape(0.2x19x10M) | (V/m) | |
| 34 | 002-140-12 | Heat Shrink Tube(Sold per meter) | m | 110DG (φ22×70L) (For Power) | (V/m) | |
| 35 | 200-000-23 | Electrical Tape(30M) | 1 | 540S(0.18T-30W×30M) | (V/m) | |
| | 002-164-12 | Heat Shrink Tube (Sold per meter) | m | A4(d13x0.3t) | (V/m) | |
| 36 | 009-114-18 | Connector | 2 | PC-4020M | | |
| 37 | 009-115-19 | Connector | 1 | PC-4020F | | |
| 38 | 140-052-17 | Hex.Bolt | 2 | M8×16L | SUS304 | |

* Indicates items included in set

| PARTS LIST | | HIGH VOLUME DEWATERING PUMP | | | 5/13/2022 | |
|------------|------------|----------------------------------|------|-----------------------------|---------------|---|
| ITEM | PART No. | DESCRIPTION | QTY | SIZE | MATERIAL | NOTES |
| 39 | 142-163-18 | Spring Washer | 2 | M8 | SUS304 | |
| 40 | 046-000-05 | Air Release Valve | 1 | GSZ/NKZ/B | SPCC | |
| 41 | 121-151-18 | Packing | 1 | P.C.80×2T | CR | * |
| 42 | 203-058-11 | Ball | 1 | φ28 | SS | |
| 43 | 140-153-19 | Hex.Bolt | 8 | M20×75L | SUS304 | |
| 44 | 142-168-13 | Spring Washer | 8 | M20 | SUS304 | |
| 45 | 142-001-15 | Washer | 8 | φ39×φ20.5×5T (for M20) | SUS304 | |
| 46 | 121-482-11 | Packing | 8 | φ34×φ19.5×4T | CR | * |
| 47 | 035-113-18 | Oil Plug | 1 | M12×14L Hex.Socket Cap Bolt | SUS304 | |
| 48 | 121-247-12 | Packing | 1 | 12.3×18×2T | PE | * |
| 49 | 050-001-32 | Motor Bracket | 1 | DD1-4-150-GSZ | FC250 | |
| 50 | 122-000-65 | O-Ring | 1 | V640 | NBR | * |
| 51 | 146-043-13 | Retaining Ring Type C(for shaft) | 1 | #80 | SK5 | |
| 52 | 052-000-83 | Bearing | 1 | NU316(EMCM) | | |
| 52.1 | 113-000-14 | Greese Pan | 1 | DD1-4-150-GSZ | FC250 | |
| 52.2 | 140-055-10 | Hex.Bolt | 4 | M8×25L | SUS304 | |
| 52.3 | 142-163-18 | Spring Washer | 4 | M8 | SUS304 | |
| 52.4 | 121-000-29 | Packing | 2 | 4×5.5×343L | Felt | * |
| 53 | 058-000-51 | Protection Plate | 1 | φ500×3.2T | SPHC+EPDM+NBR | |
| 54 | 055-004-46 | Rotor | 1Set | DD1-4-150-GSZ | | includes Rotor, Shaft, Impeller Key, Bearing Nut) |
| 55 | 147-000-76 | Impeller Key | 1 | 24×16×96L | 30Cr13 | |
| 56 | 122-000-64 | O-Ring | 1 | φ8.4×φ500 | NBR | * |
| 57 | 053-310-13 | Motor Protector | 3 | 9700K-76-215 | (H) | |
| 58 | 056-009-65 | Stator | 1Set | DD1-4-150-GSZ | | |
| | 064-001-49 | Motor Frame | 1 | DD1-4-150-GSZ | FC250 | |
| 59 | 140-153-19 | Hex.Bolt | 8 | M20×75L | SUS304 | |
| 60 | 142-165-10 | Spring Washer | 8 | M20 | SUS304 | |
| 61 | 140-099-16 | Hex.Bolt | 4 | M12×40L | SUS304 | |
| 62 | 142-165-10 | Spring Washer | 4 | M12 | SUS304 | |
| 63 | 122-000-64 | O-Ring | 1 | φ8.4×φ500 | NBR | * |
| 64 | 065-000-70 | Outer Cover | 1 | DD1-4-150-GSZ | SS400 | |
| 65 | 140-097-14 | Hex.Bolt | 4 | M12×30L | SUS304 | |
| 66 | 142-298-13 | Seal Washer | 4 | SM-12 | SUS304+NBR | |
| 67 | 062-000-33 | Bearing Cover | 1 | DD1-4-150-GSZ | FC250 | |
| 68 | 121-001-83 | Packing | 1 | 4×5.5×408L | Felt | * |
| 69 | 052-000-02 | Bearing | 1 | 7320BTDB | | |
| 70 | 141-085-12 | Bearing Nut | 1 | AN-20 | SS400 | |

| PARTS LIST | | HIGH VOLUME DEWATERING PUMP | | | 5/13/2022 | |
|------------|------------|-----------------------------|-----|----------------------------|-------------------------|-------|
| ITEM | PART No. | DESCRIPTION | QTY | SIZE | MATERIAL | NOTES |
| 71 | 142-253-16 | Bearing Washer | 1 | AW-20 | SPCC | |
| 72 | 122-000-65 | O-Ring | 1 | V640 | NBR | * |
| 73 | 140-193-11 | Hex.Bolt | 8 | M24×100L | SUS304 | |
| 74 | 142-170-18 | Spring Washer | 8 | M24 | SUS304 | |
| 75 | 060-001-95 | Bearing Housing | 1 | DD1-4-150-GSZ | FC250 | |
| 76 | 035-113-18 | Oil Plug | 4 | M12×14L Hex.Socket Cap B | SUS304 | |
| 77 | 121-247-12 | Packing | 4 | 12.3×18×2T | PE | |
| 78 | 003-151-19 | Gland | 1 | P.C.30 | SPC | |
| 79 | 090-122-11 | Leakage Sensor(Electrode) | 1 | φ9×43L | SUS | |
| 80 | 140-021-17 | Hex.Bolt | 2 | M5×20L | SUS304 | |
| 81 | 025-000-72 | Mechanical Seal | 1 | MU0095 | Cemented Carbide+Carbon | |
| 81 | 025-000-71 | Mechanical Seal | 1 | ML0090 | SIC | |
| 82 | 143-030-18 | Pan Screw | 4 | M5×14L | SWRM3 | |
| 83 | | | | | | |
| 84 | 122-314-14 | O-Ring | 1 | φ341×φ5.7 | NBR | * |
| 85 | 029-001-23 | Oil Casing | 1 | GSZ-150-4 | FC200 | |
| | 080-001-15 | Oil Pipe | 1 | 3/4"×φ50mm×167L | SUS304 | |
| | 035-113-18 | Oil Plug | 1 | M12×14L Hex.Socket Cap B | SUS304 | |
| | 121-247-12 | Packing | 1 | 12.3×18×2T | PE | * |
| | 140-021-17 | Hex.Bolt | 4 | M5×20L | SUS304 | |
| | 142-161-16 | Spring Washer | 4 | M5 2号 | SUS304 | |
| | 122-116-14 | O-Ring | 1 | G25 | NBR | * |
| 86 | 140-124-11 | Hex.Bolt | 8 | M16×40L | SUS304 | |
| 87 | 142-166-11 | Spring Washer | 8 | M16 | SUS304 | |
| 89 | 026-229-10 | Oil Seal(Upper) | 1 | TC-10012513 | NBR | |
| 90 | 071-000-64 | Shaft Sleeve | 1 | φ90xφ100x108L | SUS403 | |
| 91 | 140-100-11 | Hex.Bolt | 8 | M12×45L | SUS304 | |
| 92 | 142-165-10 | Spring Washer | 8 | M12 | SUS304 | |
| | 140-100-37 | Hex.Bolt | 4 | M12×45L(Fully threaded bol | SUS304 | |
| | 141-007-10 | Hex.Nut | 4 | M12 | SUS304 | |
| 93 | 028-000-37 | Seal Housing | 1 | GSZ-150-4 | FC200 | |
| 94 | 122-157-17 | O-Ring | 1 | G-260 | NBR | * |
| 95 | 026-229-10 | Oil Seal(Lower) | 3 | TC-10012513 | NBR | |
| 96 | 026-219-17 | Distance Piece | 2 | φ114.4×φ124.5×6T | SUS304 | |
| 98 | 020-003-35 | Pump Casing | 1 | GSZ-150-4 | FC200 | |
| | 121-001-38 | Packing | 8 | 600-65-12B | NBR | * |
| 99 | 021-010-06 | Impeller (60Hz) | 1 | GSZ-150-4 | 24CrFC | |

| PARTS LIST | | HIGH VOLUME DEWATERING PUMP | | | 5/13/2022 | |
|------------|------------|---------------------------------|-----|----------------------------|-----------------|---------------------------|
| ITEM | PART No. | DESCRIPTION | QTY | SIZE | MATERIAL | NOTES |
| 99.1 | 142-000-89 | Washer | 1 | M24 (φ26×φ110×18T) | SUS304 | S/N before 20653711001 |
| 99.2 | 217-000-24 | Fixing Plate | 1 | M24 (φ110×3T) | SUS304 | S/N before 20653711001 |
| 99.3 | 140- | Hex.Bolt | 1 | M24×50L (Full thread) | SUS304 | S/N before 20653711001 |
| 99.4 | 145-035-19 | Pin | 1 | φ5×10L | SUS304 | S/N before 20653711001 |
| 99.5 | 140-235-16 | Hex Socket Cap Bolt | 2 | M5×15L | SUS304 | S/N before 20653711001 |
| 100 | 142-001-80 | Washer | 1 | φ48×φ110×12L | SUS304 | S/N 20657311001 and later |
| 100.1 | 145-035-19 | Pin | 1 | φ5×10L | SUS304 | S/N 20657311001 and later |
| 101 | 142-174-12 | Spring Washer | 1 | M45 | SUS304 | S/N 20657311001 and later |
| 102 | 157-016-24 | Impeller Nut | 1 | M45,P=4.5 | SUS304 | S/N 20657311001 and later |
| 103 | 122-362-17 | O-Ring | 1 | φ480×φ5.7 | NBR | * |
| 104 | 022-001-95 | Suction Cover | 1 | GSZ-150-4 | FC200 | |
| 105 | 142-166-11 | Spring Washer | 8 | M16 | SUS304 | |
| 106 | 140-126-13 | Hex.Bolt | 8 | M16×50L | SUS304 | |
| | 140-001-37 | Hex.Bolt | 4 | M16×55L(Fully threaded bol | SUS304 | |
| | 141-008-11 | Hex.Nut | 4 | M16 | SUS304 | |
| 107 | 023-002-02 | Strainer Stand | 1 | GSZ-150-4 | SS400 | |
| 108 | 140-188-13 | Hex.Bolt | 8 | M24×75L | SUS304 | |
| 109 | 142-170-18 | Spring Washer | 8 | M24 | SUS304 | |
| 123 | 070-000-60 | Cooling Pipe Fixture | 1 | 3/4"×140L | SUS304 | |
| 124 | 071-000-65 | Spacer | 2 | t=1mm | SUS304 | |
| | 071-000-66 | | 2 | t=2mm | | |
| 125 | 140-075-16 | Hex.Bolt | 2 | M10×25L | SUS304 | cooling pipe |
| 126 | 142-128-11 | Washer | 2 | M10 | SUS304 | cooling pipe |
| | 142-164-19 | Spring Washer | 2 | M10 | SUS304 | cooling pipe |
| 127 | 144-579-17 | U-bolt | 1 | 32A×M10 | SUS304 | cooling pipe |
| 128 | 141-006-19 | Hex.Nut | 4 | M10 | SUS304 | cooling pipe |
| 129 | 080-001-16 | Cooling Pipe | 1 | 1·1/4"×1200L | SUS304TP(Sch40) | cooling pipe |
| 130 | 080-001-17 | Cooling Pipe | 1 | 1·1/4"×123L | SUS304TP(Sch40) | cooling pipe |
| 131 | 080-000-95 | Tee | 1 | 1·1/4" | SUS304 | cooling pipe |
| 132 | 204-000-12 | Plug | 1 | PT1·1/4", B23, H33 | SUS304 | |
| 133 | 204-000-12 | Plug | 1 | PT1·1/4", B23, H33 | SUS304 | |
| | 048-000-53 | Screwed Flange | 1 | JIS10K-NPT10" | FC200 | not shown |
| | 140-001-30 | Hex.Bolt | 12 | M22×75L | SUS304 | not shown |
| | 142-169-14 | Spring Washer | 12 | M22 | SUS304 | not shown |
| | 121-110-15 | Packing | 1 | 250A-JIS10K | NBR | * not shown |
| | 173-003-60 | Packing & O-Ring Set | 1 | | | |
| 16 | 122-264-18 | O-Ring | 2 | φ140×φ3.5 | NBR | * |

| PARTS LIST | | HIGH VOLUME DEWATERING PUMP | | | 5/13/2022 | |
|------------|------------|-----------------------------|-----|--------------------------|-----------|-------|
| ITEM | PART No. | DESCRIPTION | QTY | SIZE | MATERIAL | NOTES |
| 41 | 121-151-18 | Packing | 1 | P.C.80×2T | CR | * |
| 46 | 121-482-11 | Packing | 8 | φ34×φ19.5×4T | CR | * |
| 48 | 121-247-12 | Packing | 1 | 12.3×18×2T | PE | * |
| 50 | 122-000-65 | O-Ring | 1 | V640 | NBR | * |
| 52.4 | 121-000-29 | Packing | 2 | 4×5.5×343L | Felt | * |
| 56 | 122-000-64 | O-Ring | 1 | φ8.4×φ500 | NBR | * |
| 63 | 122-000-64 | O-Ring | 1 | φ8.4×φ500 | NBR | * |
| 68 | 121-001-83 | Packing | 1 | 4×5.5×408L | Felt | * |
| 72 | 122-000-65 | O-Ring | 1 | V640 | NBR | * |
| 77 | 121-247-12 | Packing | 4 | 12.3×18×2T | PE | * |
| 84 | 122-314-14 | O-Ring | 1 | φ341×φ5.7 | NBR | * |
| | 121-247-12 | Packing | 1 | 12.3×18×2T | PE | * |
| | 122-116-14 | O-Ring | 1 | G25 | NBR | * |
| 94 | 122-157-17 | O-Ring | 1 | G-260 | NBR | * |
| | 121-001-38 | Packing | 8 | 600-65-12B | NBR | * |
| 103 | 122-362-17 | O-Ring | 1 | φ480×φ5.7 | NBR | * |
| | 121-110-15 | Packing | 1 | 250A-JIS10K | NBR | * |
| | | Lubricant | | Turbine Oil VG32 26000ml | | |

| PARTS LIST | | HIGH VOLUME DEWATERING PUMP | | | 5/13/2022 | |
|------------|----------|-----------------------------|-----|------|-----------|-------|
| ITEM | PART No. | DESCRIPTION | QTY | SIZE | MATERIAL | NOTES |

EXPLODED VIEW

GSZ-150-4

